



LAMBA in conjunction with the Wolfman Triathlon, work together on maintaining the Nicolet Roche trail system, developing future trail projects, as well as events in Eastern Langlade/Western Oconto Counties and the Town of Wolf River.

Our goal is to create premium trail systems that will encourage people of all ages to become physically active in the outdoors through the sport of mountain biking.

LAMBA is a nonprofit 501(c)(3) organization founded in 2009 that organizes cycling activities and manages a network of mountain bike trails in the Langlade area.

BECOME A MEMBER

Your annual membership dues help LAMBA maintain and create amazing trails. Every penny goes back into the trails! Visit our website for more information! <https://www.lambatrails.com/donate>



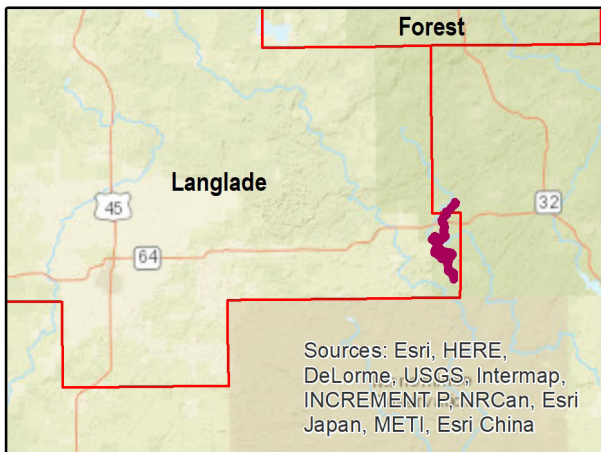
MOUNTAIN-BIKE THE NORTHWOODS



LAMBA

lambatrails@gmail.com
PO BOX 4 White Lake, WI 54491

RIDE THE NICOLET ROCHÉ



- 1 **Big Daddy**
- 2 **Cinderella**
- 3 **Drama Queen**
- 4 **The Psycho Path**
- 5 **Psych Test**
- 6 **Bear Claw**
- 7 **MOAB | Mother of All Boulders**
- 8 **Buck Snort**
- 9 **Dave's Wave**
- 10 **Marvin's Garden**
- 11 **Michelle's Bench**
- 12 **Bee Sting Hill**
- 13 **Compass Rose**
- 14 **Gravity Cavity**
- 15 **Flatwater**
- 16 **Campsite**
- 17 **Bear**
- 18 **Scout**
- 19 **Canopy**
- 20 **Maple Syrup**
- 21 **Mama's Boy**



Content may not reflect National Geographic's current map policy. Sources: National Geographic, Esri, Garmin, HERE, UNEP-WCMC, USGS, NASA, ESA, METI, NRCAN, GEBCO, NOAA, increment P Corp.