

Thank you to all our sponsors for their contribution towards a signed and designated bike route, which creates safe passage through our community, and connects people to places.

...Sponsors continued from front flap

In memory of Paul Cornelius

Jaime Horswill

Jerome Filbrandt Plumbing & Heating

Johnson Electric Coil

Kirk's Carpentry / Sunshine Trees

Lakeside Grocery

Langlade Abstract & Title, Inc.

Langlade County Economic Development Corp.

Langlade Hospital

Lawn and Snow Specialists

Little Caesar's Pizza

Lutheran Social Services of WI & Upper MI, Inc.

Luxury Living

Mariah Brown

McCormick Klessig Insurance

Northeast Asphalt

Northwestern Mutual Insurance

Peace Lutheran School

Race Gunderson 8x

Robert & Marilyn Benishek

Robert & Ruth Repp

Royce & Mary Aiello

Sartori

Shania Brown

Slidemaster

Stibbe Excavating & Grading

Strasser-Roller Funeral Home

The Antigo Eye Care Center

Tom & Mary Strasser

Tommy Horswill

Zack's Computers

Zelazoski Wood Products, Inc.

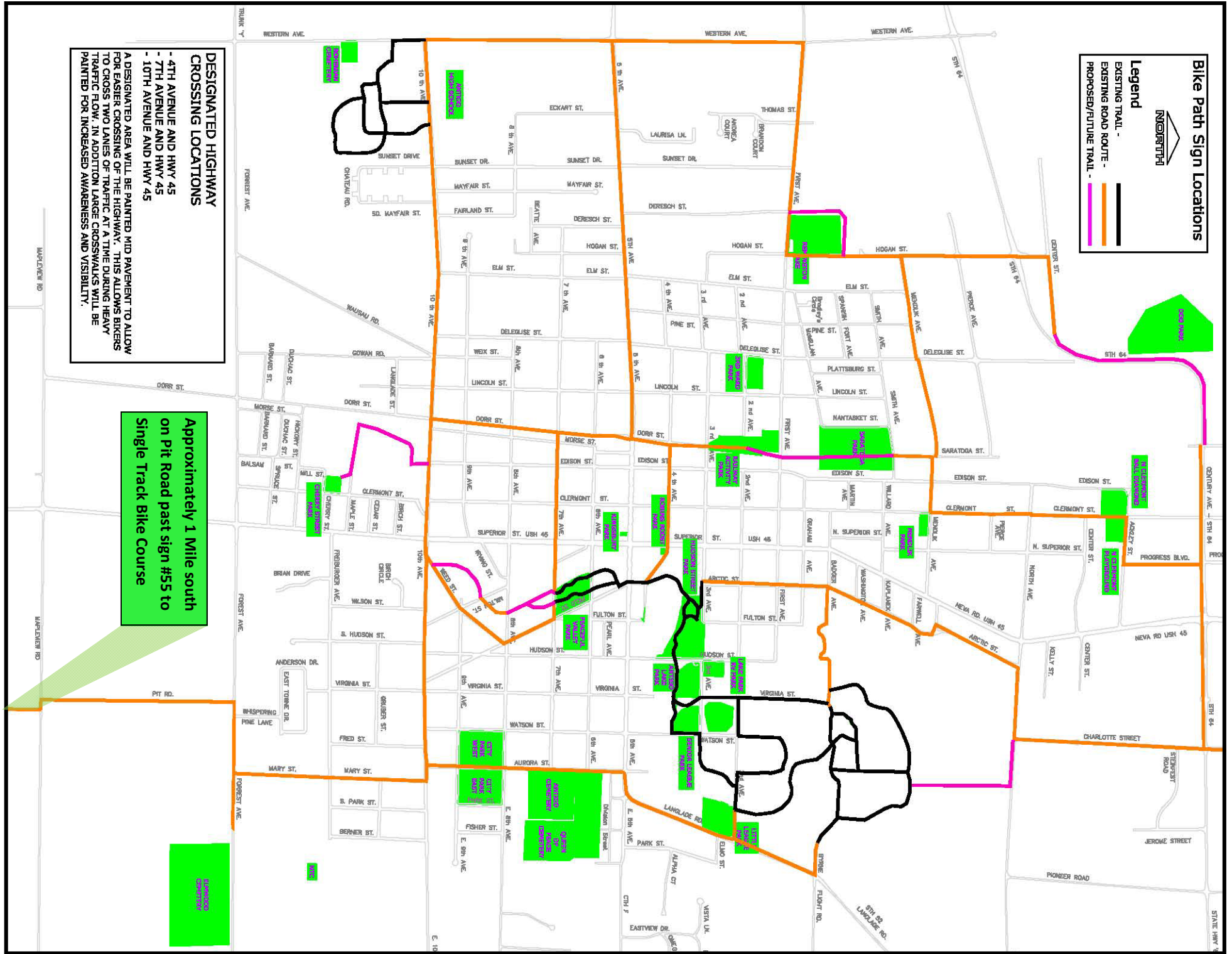


DESIGNATED HIGHWAY CROSSING LOCATIONS

- 4TH AVENUE AND HWY 45
- 7TH AVENUE AND HWY 45
- 10TH AVENUE AND HWY 45

A DESIGNATED AREA WILL BE PAINTED MID PAVEMENT TO ALLOW FOR EASIER CROSSING OF THE HIGHWAY. THIS ALLOWS BIKERS TO CROSS TWO LANES OF TRAFFIC AT A TIME DURING HEAVY TRAFFIC FLOW. IN ADDITION LARGE CROSSWALKS WILL BE PAINTED FOR INCREASED AWARENESS AND VISIBILITY.

Approximately 1 Mile south on Pit Road past sign #55 to Single Track Bike Course



Bike Path Sign Locations

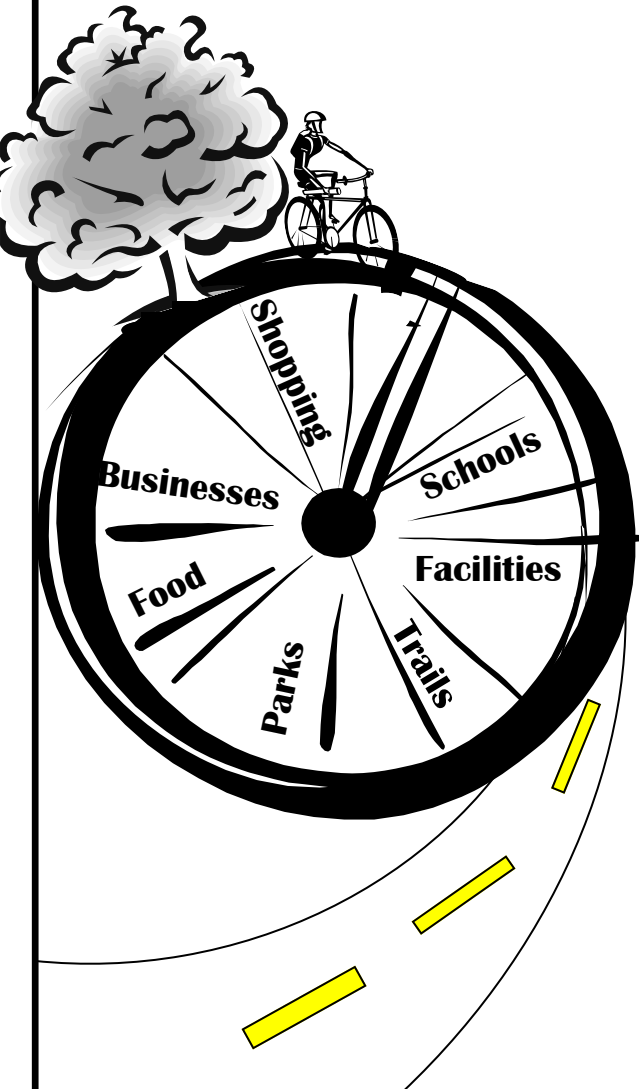
Legend

- EXISTING TRAIL - (black line)
- EXISTING ROAD ROUTE - (orange line)
- PROPOSED/FUTURE TRAIL - (pink line)



City Bike Route

Signed and Designated Bike Routes
Connecting our Community



The Goal

To create signed and designated bike routes, which provide safe connections to community amenities through the use of roads and trails; safely connecting people to places.

The “Why”

- Creating safe travel routes for bicycles will make commuting by bicycle a more enjoyable and safer experience.
- Increased awareness through signage notifies drivers that roads are shared routes for both bicycles and vehicles.
- Bicycling is a healthy and low cost transit alternative as well as a fun and healthy activity.
- Investing in bike routes and promoting our local amenities helps generate tourism and stimulate economic development.

The “How”

- Route signs will be placed approximately every 1/4 mile.
- The Signed and Designated City Wide Bike Route was made possible through community sponsorship.
- Each sign was sponsored by an individual, club, organization, group, or business. Their sponsorship shows their commitment to a designated safe bicycle route, and promotion of a healthy and fun activity.
- The local Optimist club generously funded the poles for the signs in locations where they could not be affixed to an existing post.



Continuing the project...

- Designated crossings will be painted mid-pavement to allow bikers and pedestrians to cross two lanes of traffic at a time.
- Large crosswalks will be painted for increased awareness and visibility. The crossings will be: 4th, 7th and 10th Avenue.
- Additional signs directing route users to areas of interest will be added once the route has been established (i.e. Downtown →, School →, etc.).
- We will work towards installing signal lights, at designated crossings; notifying vehicular traffic that a bicyclist or pedestrian wishes to cross.



Thank you for promoting a city wide signed and designated bike route,
which connects our community facilities, businesses, schools, and parks through paths and on-street routes.
We greatly appreciate the support and contributions!

- Absolute Realtors*
- Adam, Molly and Douglas*
- All Saints Catholic School*
- Amron*
- Ann & Eric Roller*
- Annemarie Welnetz*
- Antigo Bike & Ski Club*
- Antigo Farmers' Market*
- Antigo Firefighters Local 1000*
- Antigo Garden Club*
- Antigo Optimist Club*
- Badgerland Classics Car Club*
- Bergerwerke Bicycle since 1993*
- Bicycling Bicyclists Bicycling on Bicycles*
- Bolen Realty, Inc. &*
- Bolen Custom Home Builders, Inc*
- Boys & Girls Club of Langlade County*
- Bradley Funeral Home*
- Calvary Lutheran Church*
- Cornerstone Chiropractic*
- Cost Cutters*
- CoVantage Credit Union*
- Dean's Auto Sales*
- Elwyn Remington Foundation, Inc.*
- Faith United Church of Christ*
- Family of Dwight Teske*
- Fantastic Sam's*
- Fischer's Maintenance LLC*
- Gary Kuhlman*
- Herb & Phyllis Muehr*
- In memory of Linda Lafferty*



Sponsors continued on back flap...