

WELCOME TO THE CHEQUAMEGON NICOLET HORSE RIDING TRAILS!

The trail is located in the Chequamegon Nicolet National Forest. Located 4 miles north of the intersection of Hwys 64 and 55, turn east on Sawyer Lake Road, go 5 miles to Setting Lake Road, go south 3 miles to camp area. There is approximately 25 miles of trails with a variety of different terrains to choose from. This trail is managed by the Triple R (RRR) Horse-riding club along with other volunteers.

TRAIL DESCRIPTION

The trail is marked throughout by horseshoe signs and "You Are Here" signs at major intersections.

The trail passes through the Silver Birch horse-riding trail system, with beautiful scenery of forests, ponds, rivers & lakes.

FACILITIES

At this time there is a primitive camping area. There is water near the camp at a small stream on Setting Lake Road if you need it.

DONATIONS

If you would like to donate towards the trail maintenance, you could make your check payable and send to Triple R Riding Club, W16061 Evergreen Rd., Antigo, WI, 54409.

The trails are under continuous improvement. Your comments and input are also welcome and can be left in the suggestion box at the trail head. Volunteer help is always welcome!

TIMBER HARVESTING

You may encounter timber harvesting on your ride. Please use caution and respect the logger's equipment as they earn their livelihood.

PLEASE RESPECT THE FOREST

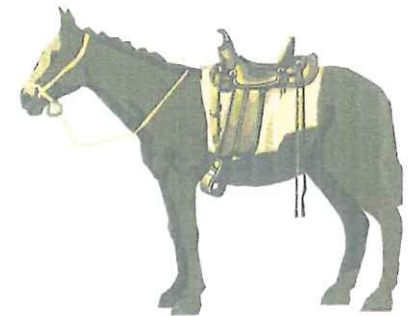
- Do not litter or harass wild life.
- Please be courteous and remove all manure from the corralled areas.
- All generators should be silent by 10:00 PM
- If you carry it in, please carry it out.
- Always fully extinguish your campfire when leaving, and never leave a campfire unattended.
- Be sure to clean your site before leaving

CALENDAR OF EVENTS

Like us or check us out on Facebook Go to "Triple R Riding Club Inc." to see a complete calendar of events for upcoming trail rides or to download the map for this trail.

CHEQUAMEGON NICOLET NATIONAL FOREST

POPPLE RIDGE HORSE- BACK RIDING TRAILS



Lakewood Ranger Station

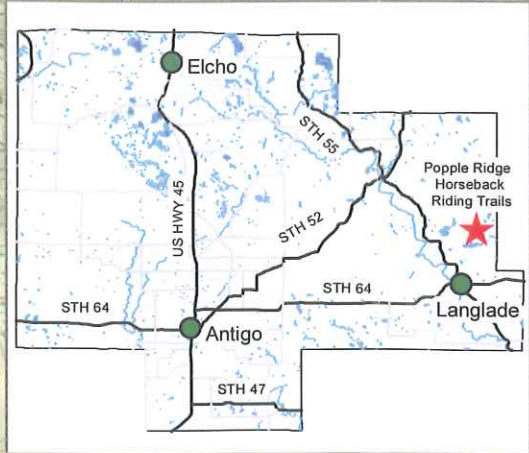
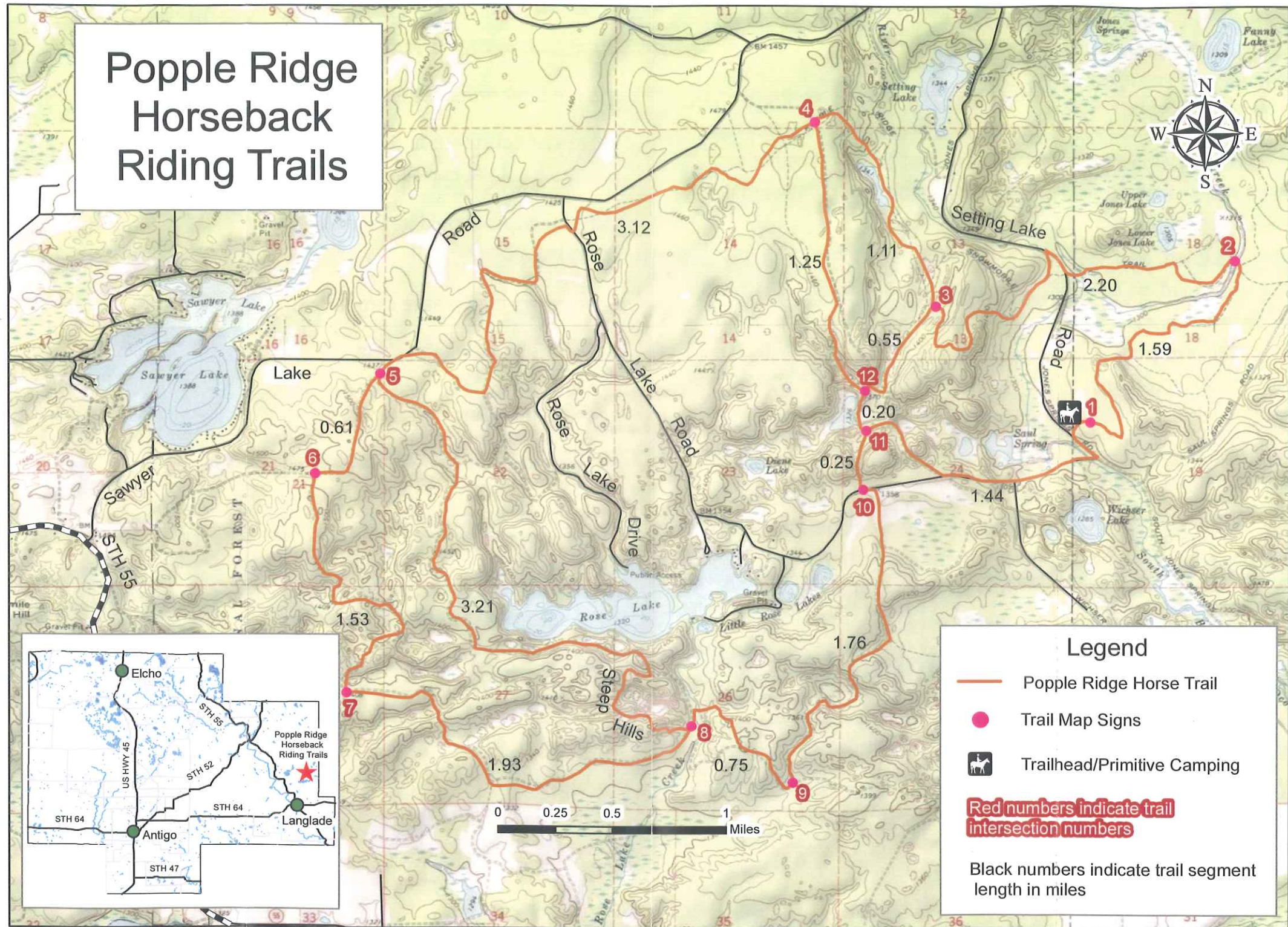
715-276-6333

Triple R Horse-Riding Club




Greg Resch 715-623-7832

Or 715-216-1703

Popple Ridge Horseback Riding Trails



Legend

-  Popple Ridge Horse Trail
-  Trail Map Signs
-  Trailhead/Primitive Camping

Red numbers indicate trail intersection numbers

Black numbers indicate trail segment length in miles